

Cadillac Ave between Carey Rd and Tillicum Rd

October 28, 2019 To November 01, 2019



The data presented here is for information purposes only and should not be considered authoritative for construction, geotechnical, engineering, navigational, legal, or other site-specific uses. The information shared is owned by the Transportation Division of the Engineering Department at the District of Saanich. Accuracy is not guaranteed.

Start Date: 28-Oct-19
 Start Time: 0:19
 Station ID: R0166-01

Location 1: Cadillac Ave between Carey Rd and Tillicum Rd

Note:

DATE:	October 28, 2019		October 29, 2019		October 30, 2019		October 31, 2019		November 1, 2019		WK AVG		WK AVG	HOURLY
	MON		TUE		WED		THURS		FRI		EB	WB	CH 1+2	%
Time:	EB	WB	EB	WB	EB	WB	EB	WB	EB	WB	EB	WB		
12-1 AM			0	2	1	3	3	2			1	2	4	0.4%
1-2 AM			0	0	0	0	3	2			1	1	2	0.2%
2-3 AM			0	0	0	0	0	1			0	0	0	0.0%
3-4 AM			3	0	3	0	2	0			3	0	3	0.3%
4-5 AM			6	2	3	1	5	2			5	2	6	0.6%
5-6 AM			3	2	9	4	3	4			5	3	8	0.8%
6-7 AM			24	7	21	5	17	7			21	6	27	2.7%
7-8 AM			50	11	45	14	46	7			47	11	58	5.7%
8-9 AM			46	14	46	15	46	18			46	16	62	6.1%
9-10 AM			43	15	52	21	54	16			50	17	67	6.7%
10-11 AM			42	18	47	18	35	17			41	18	59	5.9%
11-12 PM			36	20	32	23	47	20			38	21	59	5.9%
12-1 PM			35	29	37	28	41	26			38	28	65	6.5%
1-2 PM			38	21	36	24	35	25			36	23	60	5.9%
2-3 PM			36	24	51	25	45	21			44	23	67	6.7%
3-4 PM			45	33	40	35	54	40			46	36	82	8.2%
4-5 PM			51	45	40	65	40	69			44	60	103	10.3%
5-6 PM			33	59	41	47	26	61			33	56	89	8.9%
6-7 PM			32	20	40	27	21	29			31	25	56	5.6%
7-8 PM			17	14	28	14	17	17			21	15	36	3.5%
8-9 PM			13	17	16	14	19	17			16	16	32	3.2%
9-10 PM			14	17	15	15	12	12			14	15	28	2.8%
10-11 PM			7	17	11	21	6	1			8	13	21	2.1%
11-12 AM			5	5	4	2	7	7			5	5	10	1.0%
LANES			579	392	618	421	584	421			594	411	1005	100.0%
TOTAL			971		1039		1005				1010			
	MON		TUE		WED		THURS		FRI		WK AVG			

PEAK HOUR					TOTAL VEHICALS-PEAK PERIODS		2 HOUR PEAK INTERVALS				
MAX. 7 - 9 am PEAK HOUR	62	⇒	6.1%	between 8-9 AM	436	⇒	6 HR TOTAL	2 HR AM (7 - 9 AM)			
MAX. 7 - 11 am PEAK HOUR	67	⇒	6.7%	between 9-10 AM	312	⇒	4 HR TOTAL	VEH / HR	VEH / 2HR	2 HR %	
MAX. 11 am - 1 pm PEAK HOUR	65	⇒	6.5%	between 12-1 PM				7-8 AM	58	119	11.9%
MAX. 11 am - 3 pm PEAK HOUR	67	⇒	6.7%	between 2-3 PM				8-9 AM	62		
MAX. 4 - 6 pm PEAK HOUR	103	⇒	10.3%	between 4-5 PM				2 HR NOON (11 - 1 PM)			
MAX. 3 - 6 pm PEAK HOUR	103	⇒	10.3%	between 4-5 PM				VEH / HR	VEH / 2HR	2 HR %	
								11-12 PM	59	125	12.4%
								12-1 PM	65		
								2 HR PM (4 - 6 PM)			
								VEH / HR	VEH / 2HR	2 HR %	
								4-5 PM	103	192	19.1%
								5-6 PM	89		

Cadillac Ave between Carey Rd and Tillicum Rd

Westbound

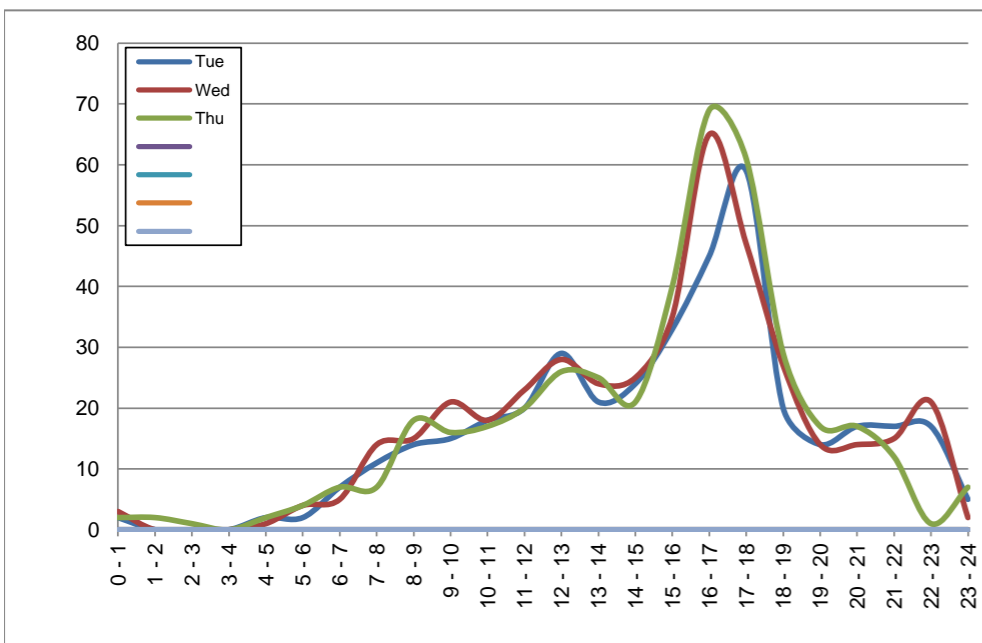
October 29, 2019 to October 31, 2019

Hourly Volumes

Time Period	Tue	Wed	Thu			
	Oct 29	Oct 30	Oct 31			
0 - 1	2	3	2			
1 - 2	0	0	2			
2 - 3	0	0	1			
3 - 4	0	0	0			
4 - 5	2	1	2			
5 - 6	2	4	4			
6 - 7	7	5	7			
7 - 8	11	14	7			
8 - 9	14	15	18			
9 - 10	15	21	16			
10 - 11	18	18	17			
11 - 12	20	23	20			
12 - 13	29	28	26			
13 - 14	21	24	25			
14 - 15	24	25	21			
15 - 16	33	35	40			
16 - 17	45	65	69			
17 - 18	59	47	61			
18 - 19	20	27	29			
19 - 20	14	14	17			
20 - 21	17	14	17			
21 - 22	17	15	12			
22 - 23	17	21	1			
23 - 24	5	2	7			
Day Total	392	421	421			

15-Minute Volumes

Time Start	Tue	Wed	Thu			
	Oct 29	Oct 30	Oct 31			
0:00	0	1	2			
0:15	1	0	0			
0:30	0	0	0			
0:45	1	2	0			
1:00	0	0	1			
1:15	0	0	1			
1:30	0	0	0			
1:45	0	0	0			
2:00	0	0	1			
2:15	0	0	0			
2:30	0	0	0			
2:45	0	0	0			
3:00	0	0	0			
3:15	0	0	0			
3:30	0	0	0			
3:45	0	0	0			
4:00	0	0	1			
4:15	0	0	0			
4:30	0	0	0			
4:45	2	1	1			
5:00	1	1	0			
5:15	1	1	0			
5:30	0	1	1			
5:45	0	1	3			
6:00	1	1	2			
6:15	3	1	2			
6:30	2	1	2			
6:45	1	2	1			
7:00	4	3	3			
7:15	2	2	1			
7:30	3	4	2			
7:45	2	5	1			
8:00	2	2	6			
8:15	1	7	3			
8:30	7	4	7			
8:45	4	2	2			
9:00	6	8	3			
9:15	2	3	5			
9:30	3	5	4			
9:45	4	5	4			
10:00	5	7	5			
10:15	6	3	4			
10:30	4	3	5			
10:45	3	5	3			
11:00	7	5	3			
11:15	8	4	3			
11:30	3	8	11			
11:45	2	6	3			
12:00	9	9	8			
12:15	6	6	6			
12:30	6	7	6			
12:45	8	6	6			
13:00	6	7	6			
13:15	4	6	6			
13:30	3	5	8			
13:45	8	6	5			
14:00	4	7	7			
14:15	9	5	6			
14:30	3	6	2			
14:45	8	7	6			
15:00	9	5	6			
15:15	7	8	11			
15:30	6	8	9			
15:45	11	14	14			
16:00	10	9	12			
16:15	9	10	18			
16:30	13	15	25			
16:45	13	31	14			
17:00	13	18	14			
17:15	17	10	15			
17:30	16	7	15			
17:45	13	12	17			
18:00	3	9	9			
18:15	4	3	6			
18:30	6	8	7			
18:45	7	7	7			
19:00	2	2	1			
19:15	3	4	6			
19:30	5	2	7			
19:45	4	6	3			
20:00	7	4	1			
20:15	2	1	5			
20:30	2	6	6			
20:45	6	3	5			
21:00	5	3	4			
21:15	5	1	4			
21:30	4	4	2			
21:45	3	7	2			
22:00	4	7	0			
22:15	5	6	0			
22:30	4	3	0			
22:45	4	5	1			
23:00	3	1	2			
23:15	1	0	3			
23:30	0	0	1			
23:45	1	1	1			



Site notes:

Cadillac Ave between Carey Rd and Tillicum Rd

Eastbound

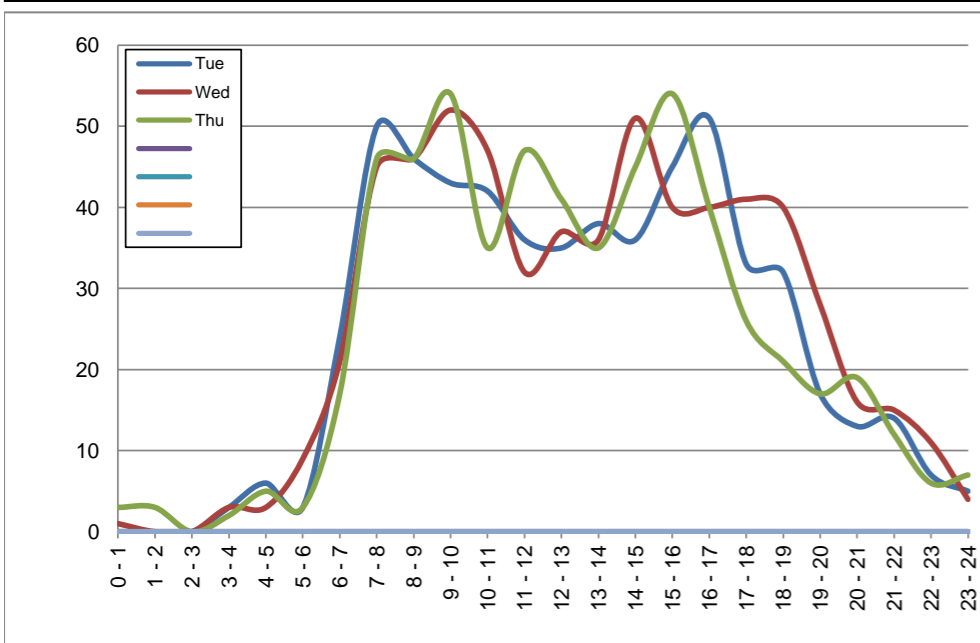
October 29, 2019 to October 31, 2019

Hourly Volumes

Time Period	Tue	Wed	Thu			
	Oct 29	Oct 30	Oct 31			
0 - 1	0	1	3			
1 - 2	0	0	3			
2 - 3	0	0	0			
3 - 4	3	3	2			
4 - 5	6	3	5			
5 - 6	3	9	3			
6 - 7	24	21	17			
7 - 8	50	45	46			
8 - 9	46	46	46			
9 - 10	43	52	54			
10 - 11	42	47	35			
11 - 12	36	32	47			
12 - 13	35	37	41			
13 - 14	38	36	35			
14 - 15	36	51	45			
15 - 16	45	40	54			
16 - 17	51	40	40			
17 - 18	33	41	26			
18 - 19	32	40	21			
19 - 20	17	28	17			
20 - 21	13	16	19			
21 - 22	14	15	12			
22 - 23	7	11	6			
23 - 24	5	4	7			
Day Total	579	618	584			

15-Minute Volumes

Time Start	Tue	Wed	Thu			
	Oct 29	Oct 30	Oct 31			
0:00	0	0	2			
0:15	0	0	0			
0:30	0	1	1			
0:45	0	0	0			
1:00	0	0	1			
1:15	0	0	1			
1:30	0	0	0			
1:45	0	0	1			
2:00	0	0	0			
2:15	0	0	0			
2:30	0	0	0			
2:45	0	0	0			
3:00	0	0	0			
3:15	0	0	1			
3:30	2	1	0			
3:45	1	2	1			
4:00	1	0	0			
4:15	0	1	0			
4:30	2	0	3			
4:45	3	2	2			
5:00	1	2	0			
5:15	0	4	2			
5:30	1	0	0			
5:45	1	3	1			
6:00	3	2	5			
6:15	9	4	7			
6:30	8	10	2			
6:45	4	5	3			
7:00	7	6	12			
7:15	12	12	8			
7:30	16	10	14			
7:45	15	17	12			
8:00	10	12	11			
8:15	11	13	16			
8:30	17	12	12			
8:45	8	9	7			
9:00	10	17	13			
9:15	5	16	15			
9:30	14	7	15			
9:45	14	12	11			
10:00	12	11	6			
10:15	9	9	12			
10:30	11	16	11			
10:45	10	11	6			
11:00	7	3	12			
11:15	5	9	12			
11:30	9	10	11			
11:45	15	10	12			
12:00	11	11	10			
12:15	10	9	12			
12:30	8	10	8			
12:45	6	7	11			
13:00	9	8	13			
13:15	13	12	11			
13:30	8	10	3			
13:45	8	6	8			
14:00	10	10	15			
14:15	9	14	6			
14:30	10	11	12			
14:45	7	16	12			
15:00	6	12	11			
15:15	12	9	16			
15:30	14	8	15			
15:45	13	11	12			
16:00	6	7	7			
16:15	14	8	16			
16:30	16	12	10			
16:45	15	13	7			
17:00	10	13	5			
17:15	10	8	6			
17:30	8	7	9			
17:45	5	13	6			
18:00	9	12	7			
18:15	8	3	6			
18:30	4	12	5			
18:45	11	13	3			
19:00	4	6	7			
19:15	5	8	3			
19:30	4	7	3			
19:45	4	7	4			
20:00	4	5	7			
20:15	2	4	5			
20:30	4	5	2			
20:45	3	2	5			
21:00	3	4	1			
21:15	7	8	4			
21:30	2	2	3			
21:45	2	1	4			
22:00	3	4	1			
22:15	1	3	1			
22:30	1	4	2			
22:45	2	0	2			
23:00	1	2	1			
23:15	3	0	5			
23:30	0	2	1			
23:45	1	0	0			



Site notes:

Vehicle Speed Summary

Saanich Engineering Department

Count Id: [R0166-01](#)

Filename: [Cadillac Ave between Carey Rd and Tillicum Rd-Oct-2019.xlsm](#)

Location: Cadillac Ave between Carey Rd and Tillicum Rd

Note:

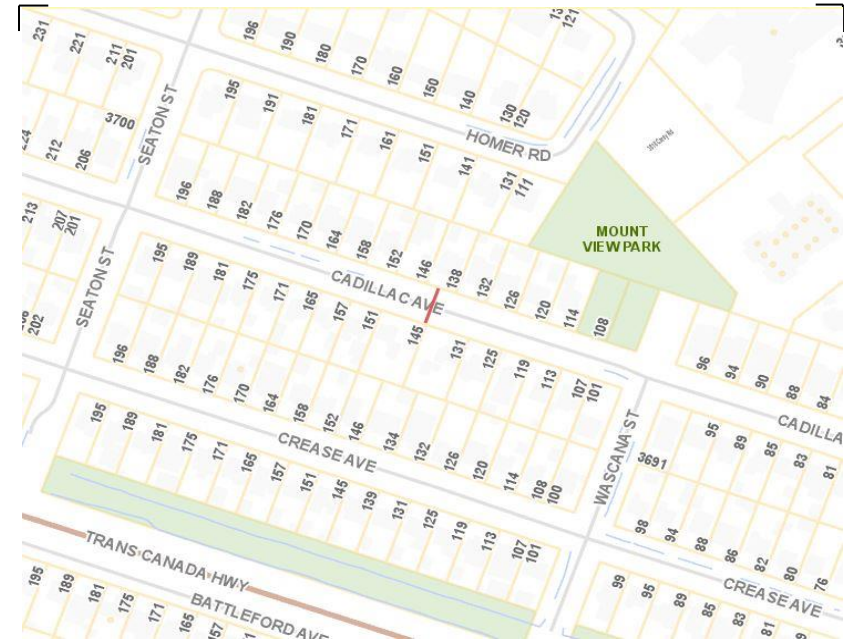
Direction: **East-West**

Dates: **October 28, 2019 To November 01, 2019**

Filtered data

AVG. SPEED	22 mph	36 km/h
50 % SPEED	23 mph	37 km/h
85 % SPEED	28 mph	45 km/h
95 % SPEED	31 mph	49 km/h

Location Map



Cadillac Ave between Carey Rd and Tillicum Rd

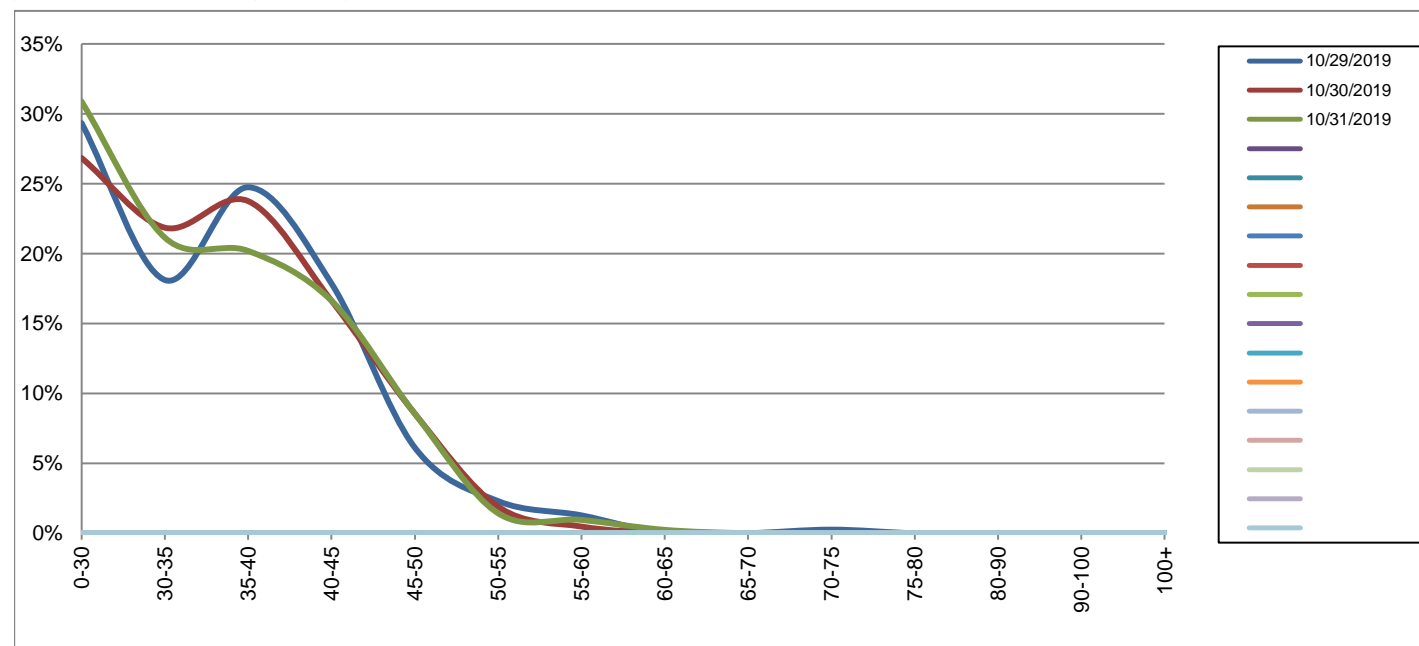
Westbound

October 29, 2019 to October 31, 2019

Daily Speed Bin Percentages															Daily Speed Bin Volumes														Total	Avg.
Bin #	1	2	3	4	5	6	7	8	9	10	11	12	13	14	1	2	3	4	5	6	7	8	9	10	11	12	13	14	Volume	Speed
Bin Speeds	0-30	30-35	35-40	40-45	45-50	50-55	55-60	60-65	65-70	70-75	75-80	80-90	90-100	100+	0-30	30-35	35-40	40-45	45-50	50-55	55-60	60-65	65-70	70-75	75-80	80-90	90-100	100+		
10/29/2019	29.3%	18.1%	24.7%	17.9%	6.1%	2.3%	1.3%	0.0%	0.0%	0.3%	0.0%	0.0%	0.0%	0.0%	115	71	97	70	24	9	5	0	0	1	0	0	0	0	392	32
10/30/2019	26.8%	21.9%	23.8%	16.6%	8.6%	1.9%	0.5%	0.0%	0.0%	0.0%	0.0%	0.0%	0.0%	0.0%	113	92	100	70	36	8	2	0	0	0	0	0	0	0	421	32
10/31/2019	30.9%	21.1%	20.2%	16.6%	8.6%	1.4%	1.0%	0.2%	0.0%	0.0%	0.0%	0.0%	0.0%	0.0%	130	89	85	70	36	6	4	1	0	0	0	0	0	0	421	32
Total	29.0%	20.4%	22.9%	17.0%	7.8%	1.9%	0.9%	0.1%	0.0%	0.1%	0.0%	0.0%	0.0%	0.0%	358	252	282	210	96	23	11	1	0	1	0	0	0	1234	32	

Speed Data Summary

Bin #	1	2	3	4	5	6	7	8	9	10	11	12	13	14	Total
Bin Speeds	0-30	30-35	35-40	40-45	45-50	50-55	55-60	60-65	65-70	70-75	75-80	80-90	90-100	100+	
Survey Total	358	252	282	210	96	23	11	1	0	1	0	0	0	0	1234
% Total	29.0%	20.4%	22.9%	17.0%	7.8%	1.9%	0.9%	0.1%	0.0%	0.1%	0.0%	0.0%	0.0%	0.0%	100%
Accumulated %	29.0%	49.4%	72.3%	89.3%	97.1%	98.9%	99.8%	99.9%	99.9%	100.0%	100.0%	100.0%	100.0%	100%	
Inverse Accum. %	71.0%	50.6%	27.7%	10.7%	2.9%	1.1%	0.2%	0.1%	0.1%	0.0%	0.0%	0.0%	0.0%	0.0%	
Average Speed	32 KM/H														



Site notes:

Cadillac Ave between Carey Rd and Tillicum Rd

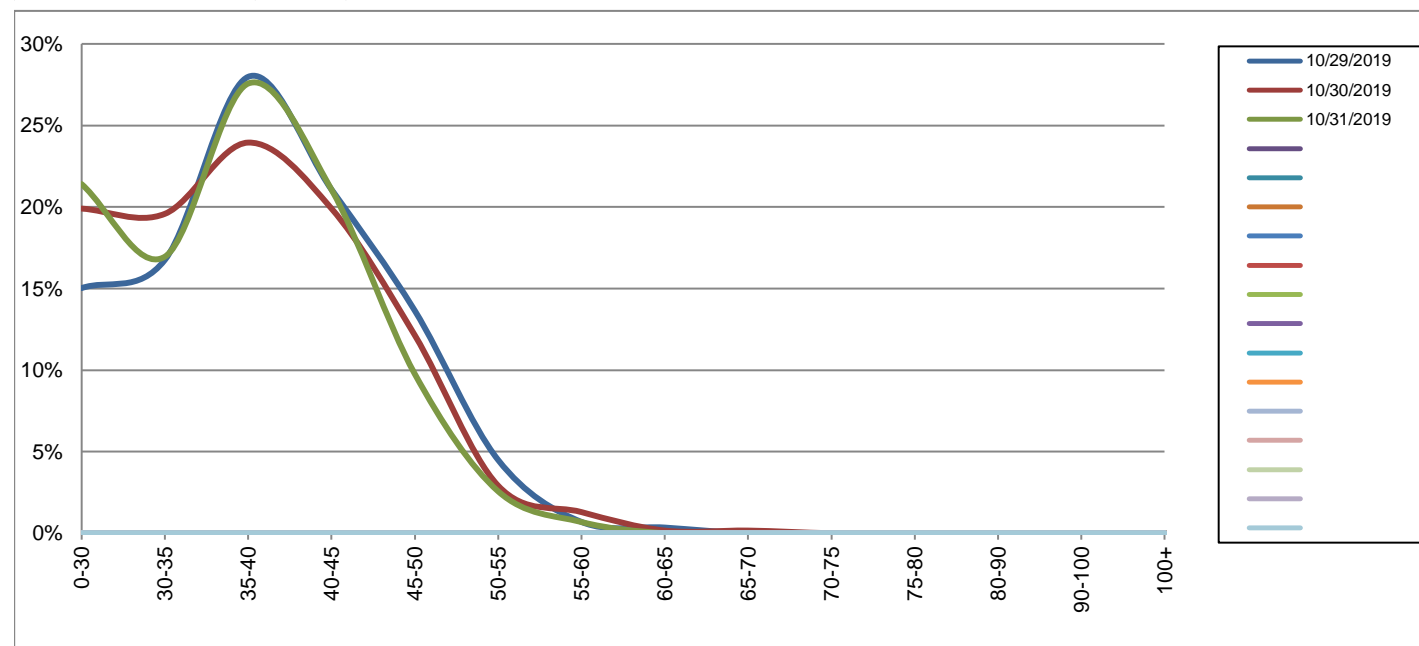
Eastbound

October 29, 2019 to October 31, 2019

Daily Speed Bin Percentages															Daily Speed Bin Volumes														Total	Avg.
Bin #	1	2	3	4	5	6	7	8	9	10	11	12	13	14	1	2	3	4	5	6	7	8	9	10	11	12	13	14	Volume	Speed
Bin Speeds	0-30	30-35	35-40	40-45	45-50	50-55	55-60	60-65	65-70	70-75	75-80	80-90	90-100	100+	0-30	30-35	35-40	40-45	45-50	50-55	55-60	60-65	65-70	70-75	75-80	80-90	90-100	100+		
10/29/2019	15.0%	16.8%	28.0%	21.1%	13.6%	4.5%	0.7%	0.3%	0.0%	0.0%	0.0%	0.0%	0.0%	0.0%	87	97	162	122	79	26	4	2	0	0	0	0	0	0	579	37
10/30/2019	19.9%	19.6%	23.9%	19.9%	12.1%	2.9%	1.3%	0.2%	0.2%	0.0%	0.0%	0.0%	0.0%	0.0%	123	121	148	123	75	18	8	1	1	0	0	0	0	0	618	35
10/31/2019	21.4%	17.0%	27.6%	21.1%	9.8%	2.6%	0.7%	0.0%	0.0%	0.0%	0.0%	0.0%	0.0%	0.0%	125	99	161	123	57	15	4	0	0	0	0	0	0	0	584	34
Total	18.8%	17.8%	26.4%	20.7%	11.8%	3.3%	0.9%	0.2%	0.1%	0.0%	0.0%	0.0%	0.0%	0.0%	335	317	471	368	211	59	16	3	1	0	0	0	0	1781	35	

Speed Data Summary

Bin #	1	2	3	4	5	6	7	8	9	10	11	12	13	14	Total
Bin Speeds	0-30	30-35	35-40	40-45	45-50	50-55	55-60	60-65	65-70	70-75	75-80	80-90	90-100	100+	
Survey Total	335	317	471	368	211	59	16	3	1	0	0	0	0	0	1781
% Total	18.8%	17.8%	26.4%	20.7%	11.8%	3.3%	0.9%	0.2%	0.1%	0.0%	0.0%	0.0%	0.0%	0.0%	100%
Accumulated %	18.8%	36.6%	63.1%	83.7%	95.6%	98.9%	99.8%	99.9%	100.0%	100.0%	100.0%	100.0%	100.0%	100.0%	
Inverse Accum. %	81.2%	63.4%	36.9%	16.3%	4.4%	1.1%	0.2%	0.1%	0.0%	0.0%	0.0%	0.0%	0.0%	0.0%	
Average Speed	35 KM/H														



Site notes:

Cadillac Ave between Carey Rd and Tillicum Rd

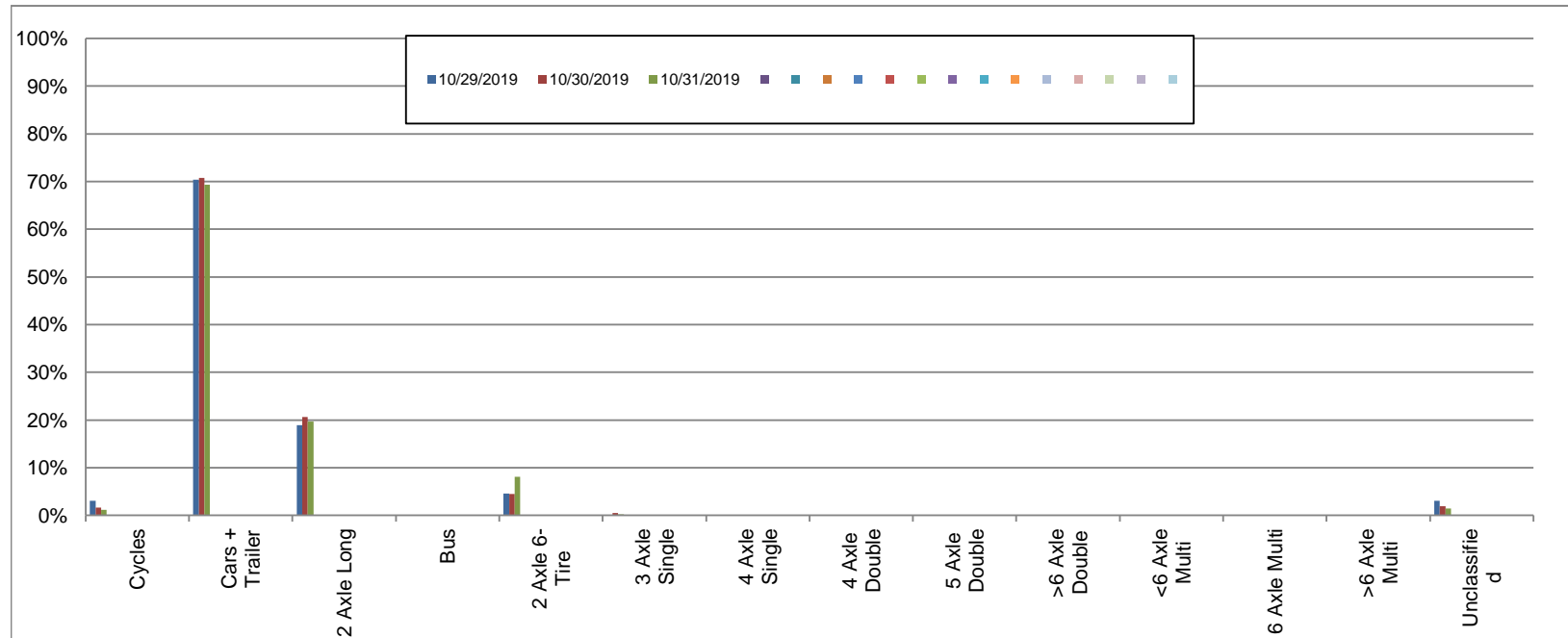
Westbound

October 29, 2019 to October 31, 2019

Daily Class Bin Percentages															Daily Class Bin Volumes											Total Volume				
Bin #	1	2	3	4	5	6	7	8	9	10	11	12	13	14	1	2	3	4	5	6	7	8	9	10	11		12	13	14	
Bin Class	Cycles	Cars + Trailer	2 Axle Long	Bus	2 Axle 6-Tire	3 Axle Single	4 Axle Single	4 Axle Double	5 Axle Double	>6 Axle Double	<6 Axle Multi	6 Axle Multi	>6 Axle Multi	Unclassified	Cycles	Cars + Trailer	2 Axle Long	Bus	2 Axle 6-Tire	3 Axle Single	4 Axle Single	4 Axle Double	5 Axle Double	>6 Axle Double	<6 Axle Multi	6 Axle Multi	>6 Axle Multi	Unclassified		
10/29/2019	3.1%	70.4%	18.9%	0.0%	4.6%	0.0%	0.0%	0.0%	0.0%	0.0%	0.0%	0.0%	0.0%	3.1%	12	276	74	0	18	0	0	0	0	0	0	0	0	0	12	392
10/30/2019	1.7%	70.8%	20.7%	0.0%	4.5%	0.5%	0.0%	0.0%	0.0%	0.0%	0.0%	0.0%	0.0%	1.9%	7	298	87	0	19	2	0	0	0	0	0	0	0	0	8	421
10/31/2019	1.2%	69.4%	19.7%	0.0%	8.1%	0.2%	0.0%	0.0%	0.0%	0.0%	0.0%	0.0%	0.0%	1.4%	5	292	83	0	34	1	0	0	0	0	0	0	0	0	6	421
Total	1.9%	70.2%	19.8%	0.0%	5.8%	0.2%	0.0%	0.0%	0.0%	0.0%	0.0%	0.0%	0.0%	2.1%	24	866	244	0	71	3	0	0	0	0	0	0	0	26	1234	

Class Data Summary

Bin #	1	2	3	4	5	6	7	8	9	10	11	12	13	14	Total Volume
Bin Class	Cycles	Cars + Trailer	2 Axle Long	Bus	2 Axle 6-Tire	3 Axle Single	4 Axle Single	4 Axle Double	5 Axle Double	>6 Axle Double	<6 Axle Multi	6 Axle Multi	>6 Axle Multi	Unclassified	
Survey Total	24	866	244	0	71	3	0	0	0	0	0	0	0	26	1234
% Total	1.9%	70.2%	19.8%	0.0%	5.8%	0.2%	0.0%	0.0%	0.0%	0.0%	0.0%	0.0%	0.0%	2.1%	100%
Accumulated %	1.9%	72.1%	91.9%	91.9%	97.6%	97.9%	97.9%	97.9%	97.9%	97.9%	97.9%	97.9%	97.9%	100.0%	
Inv. Accum. %	98.1%	27.9%	8.1%	8.1%	2.4%	2.1%	2.1%	2.1%	2.1%	2.1%	2.1%	2.1%	2.1%	0.0%	



Classification Descriptions

Bin #	Bin Description
1	Motorcycles
2	Passenger cars, including those with recreational trailers
3	2-axle pick-ups, vans, and RVs, including those with recreational trailers
4	Buses
5	2-axle, 6-tire single units
6	3-axle single units
7	4-axle single units
8	3-axle or 4-axle double unit
9	5-axle double unit
10	6-, 7-, or 8-axle double unit
11	5-axle multiple unit
12	6-axle multiple unit
13	7-or-more-axle multiple unit
14	Vehicles that could not be classified

Site notes:

Cadillac Ave between Carey Rd and Tillicum Rd

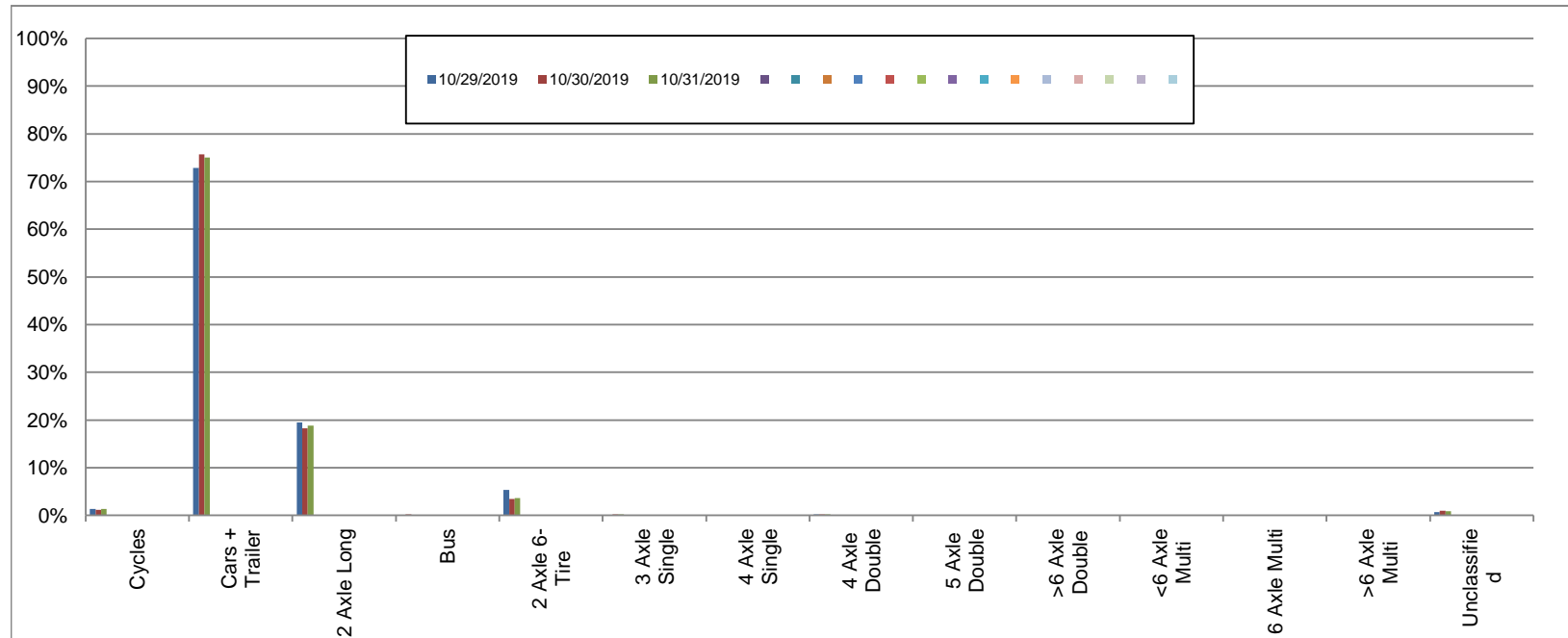
Eastbound

October 29, 2019 to October 31, 2019

Daily Class Bin Percentages															Daily Class Bin Volumes											Total Volume			
Bin #	1	2	3	4	5	6	7	8	9	10	11	12	13	14	1	2	3	4	5	6	7	8	9	10	11		12	13	14
Bin Class	Cycles	Cars + Trailer	2 Axle Long	Bus	2 Axle 6-Tire	3 Axle Single	4 Axle Single	4 Axle Double	5 Axle Double	>6 Axle Double	<6 Axle Multi	6 Axle Multi	>6 Axle Multi	Unclassified	Cycles	Cars + Trailer	2 Axle Long	Bus	2 Axle 6-Tire	3 Axle Single	4 Axle Single	4 Axle Double	5 Axle Double	>6 Axle Double	<6 Axle Multi	6 Axle Multi	>6 Axle Multi	Unclassified	
10/29/2019	1.4%	72.9%	19.5%	0.0%	5.4%	0.0%	0.0%	0.2%	0.0%	0.0%	0.0%	0.0%	0.0%	0.7%	8	422	113	0	31	0	0	1	0	0	0	0	0	4	579
10/30/2019	1.1%	75.7%	18.3%	0.2%	3.4%	0.2%	0.0%	0.2%	0.0%	0.0%	0.0%	0.0%	0.0%	1.0%	7	468	113	1	21	1	0	1	0	0	0	0	0	6	618
10/31/2019	1.4%	75.0%	18.8%	0.0%	3.6%	0.2%	0.0%	0.2%	0.0%	0.0%	0.0%	0.0%	0.0%	0.9%	8	438	110	0	21	1	0	1	0	0	0	0	0	5	584
Total	1.3%	74.6%	18.9%	0.1%	4.1%	0.1%	0.0%	0.2%	0.0%	0.0%	0.0%	0.0%	0.0%	0.8%	23	1328	336	1	73	2	0	3	0	0	0	0	15	1781	

Class Data Summary

Bin #	1	2	3	4	5	6	7	8	9	10	11	12	13	14	Total Volume
Bin Class	Cycles	Cars + Trailer	2 Axle Long	Bus	2 Axle 6-Tire	3 Axle Single	4 Axle Single	4 Axle Double	5 Axle Double	>6 Axle Double	<6 Axle Multi	6 Axle Multi	>6 Axle Multi	Unclassified	Total Volume
Survey Total	23	1328	336	1	73	2	0	3	0	0	0	0	0	15	1781
% Total	1.3%	74.6%	18.9%	0.1%	4.1%	0.1%	0.0%	0.2%	0.0%	0.0%	0.0%	0.0%	0.0%	0.8%	100%
Accumulated %	1.3%	75.9%	94.7%	94.8%	98.9%	99.0%	99.0%	99.2%	99.2%	99.2%	99.2%	99.2%	99.2%	100.0%	
Inv. Accum. %	98.7%	24.1%	5.3%	5.2%	1.1%	1.0%	1.0%	0.8%	0.8%	0.8%	0.8%	0.8%	0.8%	0.0%	



Classification Descriptions

Bin #	Bin Description
1	Motorcycles
2	Passenger cars, including those with recreational trailers
3	2-axle pick-ups, vans, and RVs, including those with recreational trailers
4	Buses
5	2-axle, 6-tire single units
6	3-axle single units
7	4-axle single units
8	3-axle or 4-axle double unit
9	5-axle double unit
10	6-, 7-, or 8-axle double unit
11	5-axle multiple unit
12	6-axle multiple unit
13	7-or-more-axle multiple unit
14	Vehicles that could not be classified

Site notes: